

HYBRID & COAX CABLES

POWER/GROUNDING

FIBER

ANTENNAS

RR/HBBU

PENETRATIONS



SITE NAME: **CO3 DT EDWARDS**  
 PROJECT: NEW BUILD - ZONING DOCUMENTS  
 SITE ADDRESS: 151 MILLER RANCH ROAD  
 EDWARDS, CO 81631



PROJECT INFORMATION  
 SITE NAME  
**CO3 DT EDWARDS**  
 151 MILLER RANCH ROAD  
 EDWARDS, CO 81631

CONSULTANT

EXISTING CONDITIONS



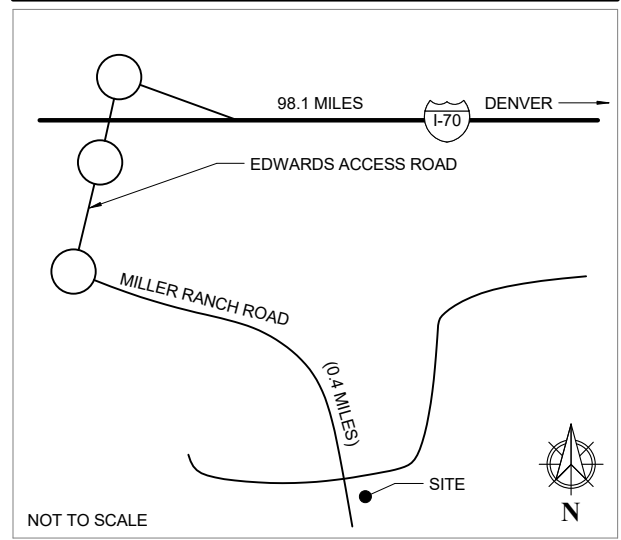
PROJECT DESCRIPTION

- REPLACE EXISTING LIGHT POLE WITH NEW MONOPOLE WITH NEW VERIZON WIRELESS ANTENNAS & EQUIPMENT
- NEW VERIZON WIRELESS OUTDOOR EQUIPMENT ON NEW STEEL PLATFORM WITH CANOPY IN NEW CMU EQUIPMENT ENCLOSURE

PROJECT TEAM

<b>OWNER</b> EAGLE COUNTY SCHOOL DISTRICT CONTACT: SANDRA MUTCHLER PHONE: 970.328.2747	<b>CLIENT</b> VERIZON WIRELESS CONSTRUCTION ENGINEER JASON SHELLEDY 3131 S. VAUGHN WAY SUITE 550 AURORA CO, 80014 CELL: 970.646.1283	<b>RF ENGINEER</b> VERIZON WIRELESS BRYAN EICENS 3131 S. VAUGHN WAY SUITE 550 AURORA, CO 80014 PHONE: 617.835.2690	<b>SITE ACQUISITIONIST</b> SHAWN TURK BLACK & VEATCH CORP. 4600 SOUTH SYRACUSE ST. SUITE 800 DENVER, CO 80237 PHONE: 720.834.4361	<b>ARCHITECT</b> CHARLES STECKLY, AIA CSA 5935 S. ZANG STREET SUITE 280 LITTLETON, CO 80127 CELL: 303.210.8972 OFFICE: 303.932.9974	<b>SURVEYOR</b> PRECISION SURVEYING & MAPPING 9145 KENYON AVE SUITE 101 DENVER, CO 80237 PHONE: 303.753.9799
--	---	--	---	--	--

VICINITY MAP



DIRECTIONS

- FROM DENVER
- US-6 W / 6TH AVE (7.6 MILES)
  - EXIT ONTO I-70 W (98.1 MILES)
  - EXIT 163 TOWARDS EDWARDS ACCESS ROAD (0.2 MILES)
  - FOLLOW EDWARDS ACCESS ROAD TO MILLER RANCH ROAD (0.4 MILES)
  - SITE WILL BE ON THE LEFT BEHIND HIGH SCHOOL STADIUM

PROJECT DATA

JURISDICTION	EAGLE COUNTY
APN	210504314001
ZONING DESIGNATION	PUD
<b>EQUIPMENT AREA</b>	
OCCUPANCY GROUP	U
CONSTRUCTION TYPE	V-B
FULLY SPRINKLERED	N/A
NO. STORIES	N/A

GOVERNING CODES:  
 2015 IBC, 2015 IFC, 2015 IMC, 2015 IECC, 2014 NEC

A.D.A. COMPLIANCE  
 THIS FACILITY IS UNMANNED AND NOT FOR HUMAN HABITATION

DRAWING INDEX

SHEET	DESCRIPTION
T1.0	TITLE SHEET
LS1	SITE SURVEY
LS2	SITE SURVEY
A1.0	SITE PLAN
A2.0	ENLARGED SITE PLAN
A2.1	EQUIPMENT PLAN
A3.0	NORTHEAST ELEVATION
A3.1	ELEVATIONS

REV	DATE	DESCRIPTION	BY
A	01/26/17	CONCEPT	ERR
B	02/28/17	ZD REVIEW	ERR

1st REVIEW SB 2nd REVIEW SGP

**CHARLES STECKLY**  
**ARCHITECTURE**  
 5935 SOUTH ZANG STREET, SUITE 280  
 LITTLETON, COLORADO 80127  
 OFFICE: 303.932.9974

**NOT FOR CONSTRUCTION**

TITLE SHEET

**T1.0**

HYBRID & COAX CABLES

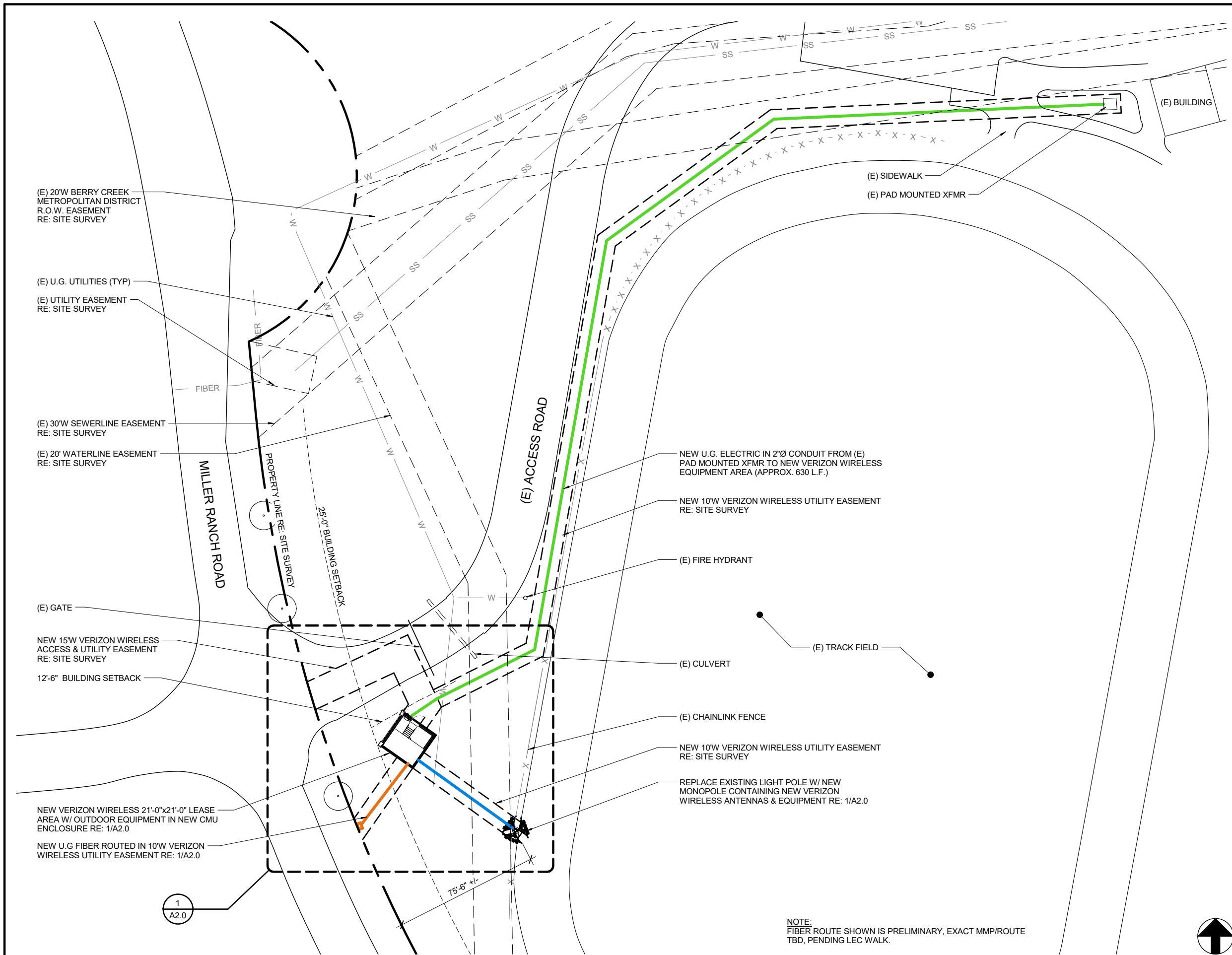
POWER/GROUNDING

FIBER

ANTENNAS

RR/HBBU

PENETRATIONS



1 - SITE PLAN

A	01/26/17	CONCEPT	ERR
B	02/28/17	ZD REVIEW	ERR

1st REVIEW SB 2nd REVIEW SGP

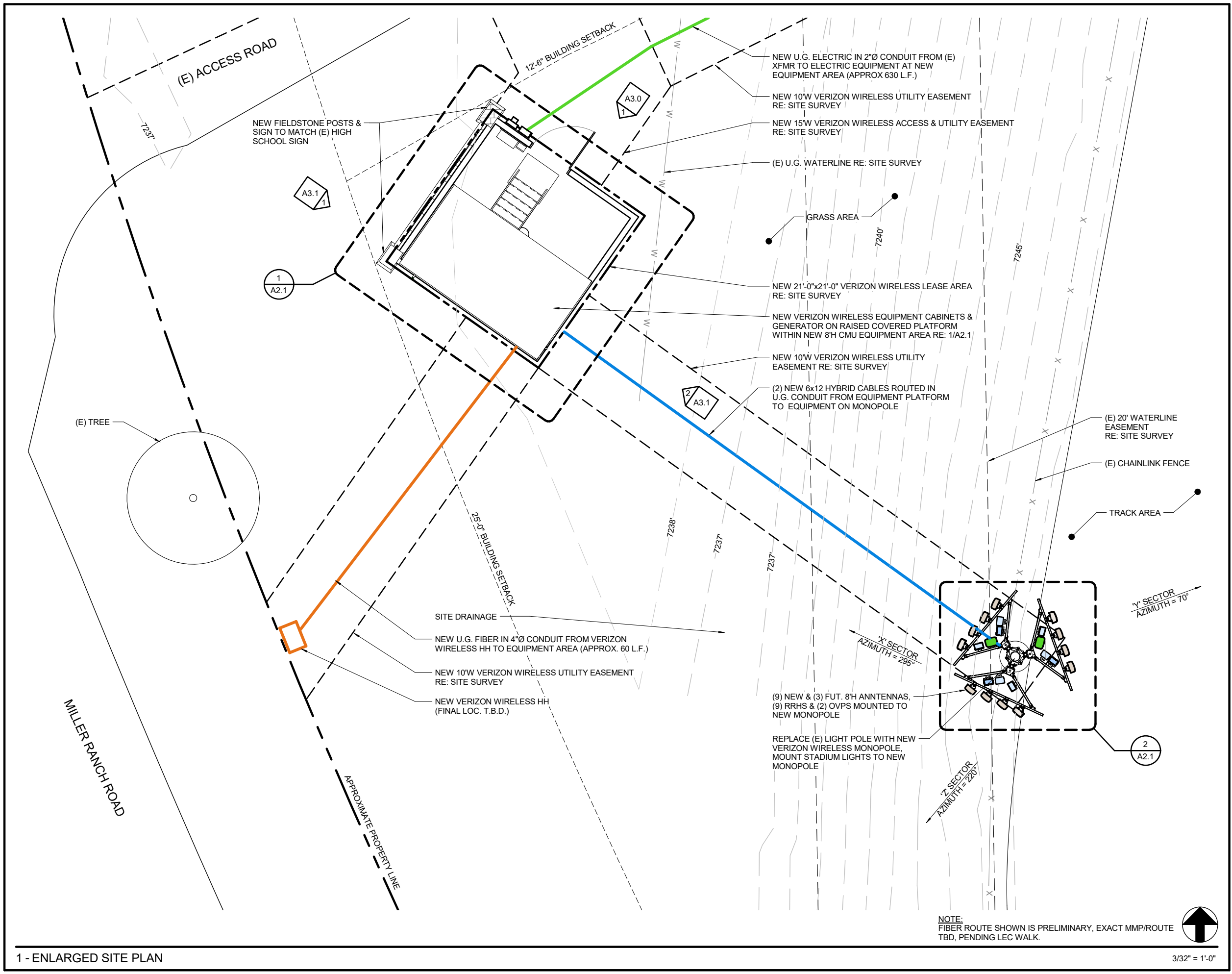
**CHARLES STECKLY**  
**ARCHITECTURE**  
 5935 SOUTH ZANG STREET, SUITE 280  
 LITTLETON, COLORADO 80127  
 OFFICE: 303.932.9974

**NOT FOR CONSTRUCTION**



1" = 50'-0"

HYBRID & COAX CABLES  
 POWER/GROUNDING  
 FIBER  
 ANTENNAS  
 RR/HBBU  
 PENETRATIONS



A	01/26/17	CONCEPT	ERR
B	02/28/17	ZD REVIEW	ERR

1st REVIEW SB 2nd REVIEW SGP

**CHARLES STECKLY**  
 ARCHITECTURE  
 5935 SOUTH ZANG STREET, SUITE 280  
 LITTLETON, COLORADO 80127  
 OFFICE: 303.932.9974

**NOT FOR CONSTRUCTION**

ENLARGED SITE PLAN

**A2.0**

1 - ENLARGED SITE PLAN

NOTE:  
 FIBER ROUTE SHOWN IS PRELIMINARY, EXACT MMP/ROUTE  
 TBD, PENDING LEC WALK.



3/32" = 1'-0"

HYBRID & COAX CABLES

POWER/GROUNDING

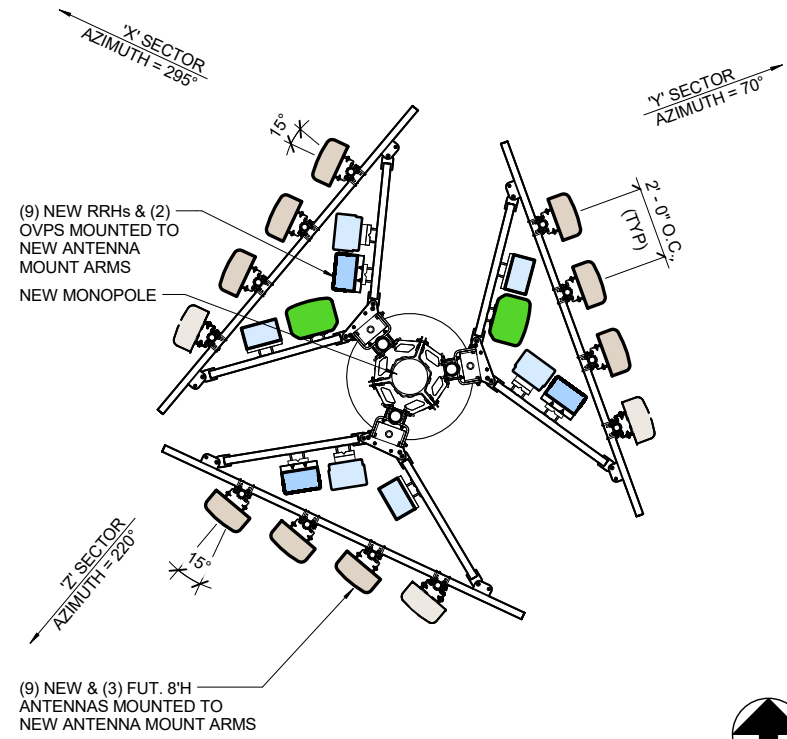
FIBER

ANTENNAS

RRH/BBU

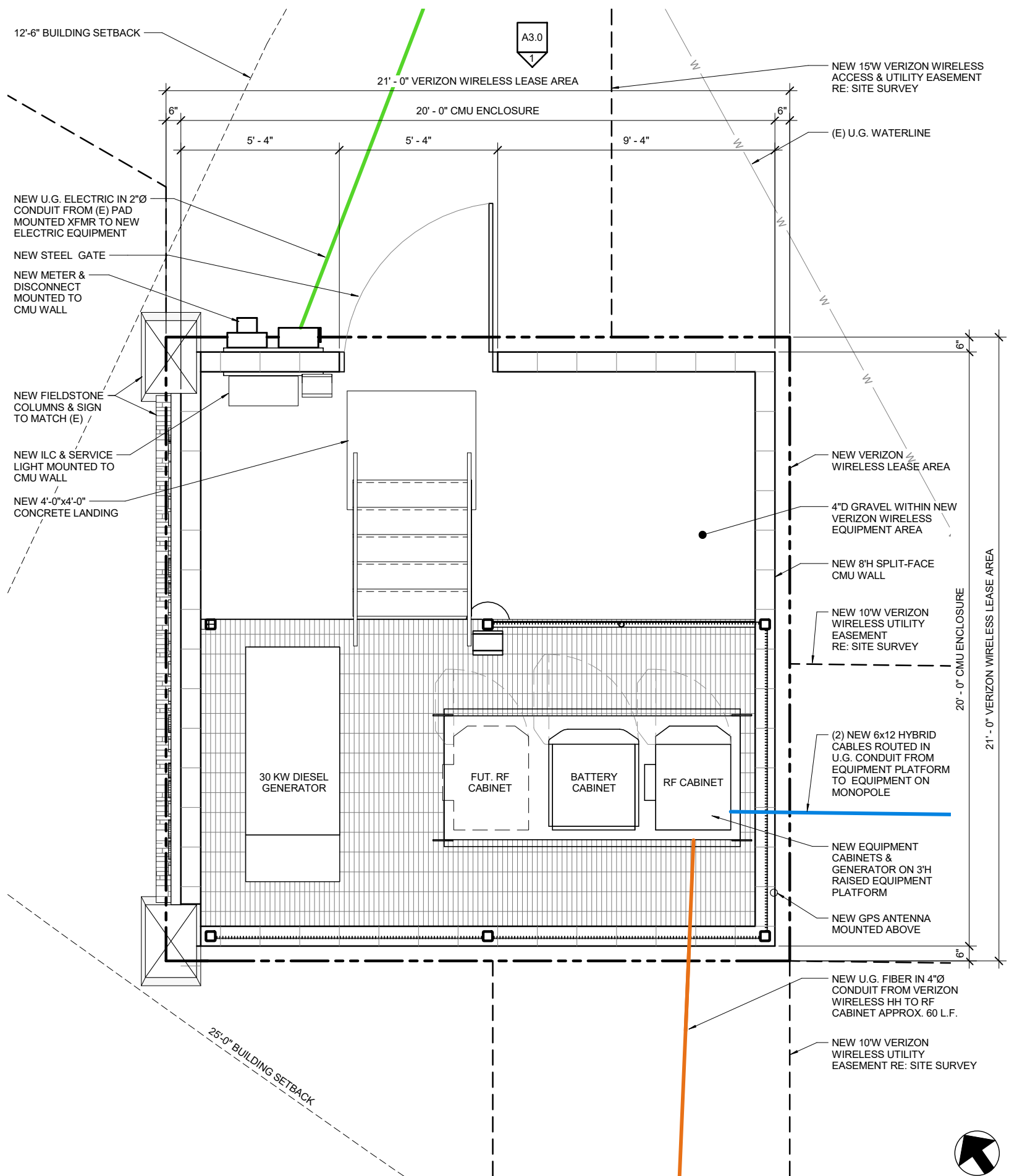
PENETRATIONS

3 - NOT USED



2 - ANTENNA PLAN

3/16" = 1'-0"



1 - EQUIPMENT PLAN

1/4" = 1'-0"



VERIZON WIRELESS SERVICES  
3131 S. VAUGHN WAY, SUITE 500  
AURORA, CO 80014

PROJECT INFORMATION

SITE NAME  
**CO3 DT EDWARDS**  
151 MILLER RANCH ROAD  
EDWARDS, CO 81631

CONSULTANT

A	01/26/17	CONCEPT	ERR
B	02/28/17	ZD REVIEW	ERR

1st REVIEW SB 2nd REVIEW SGP

**CHARLES STECKLY**  
**ARCHITECTURE**  
5935 SOUTH ZANG STREET, SUITE 280  
LITTLETON, COLORADO 80127  
OFFICE: 303.932.9974

**NOT FOR CONSTRUCTION**

EQUIPMENT PLAN

**A2.1**

HYBRID & COAX CABLES

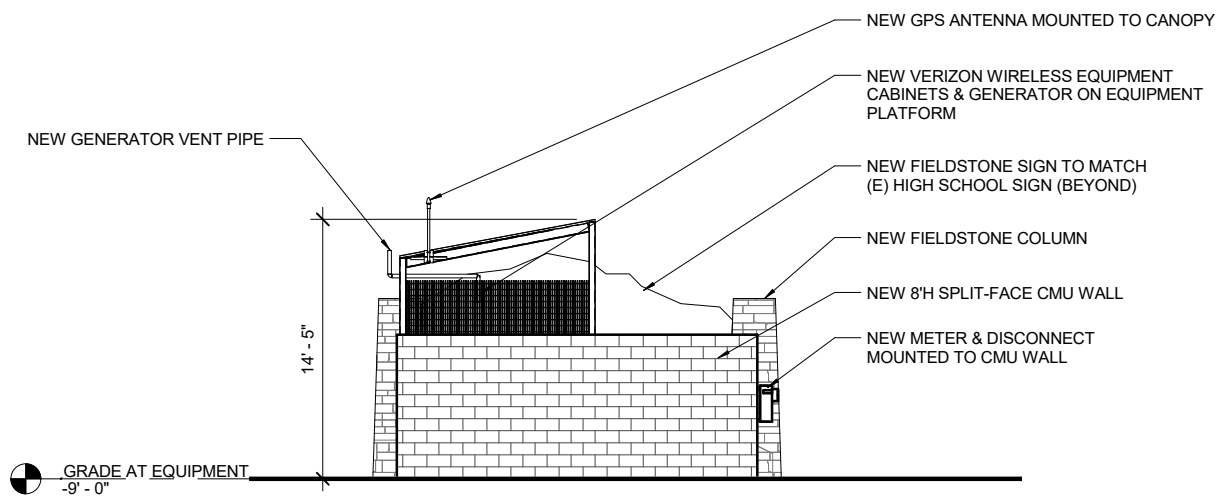
POWER/GROUNDING

FIBER

ANTENNAS

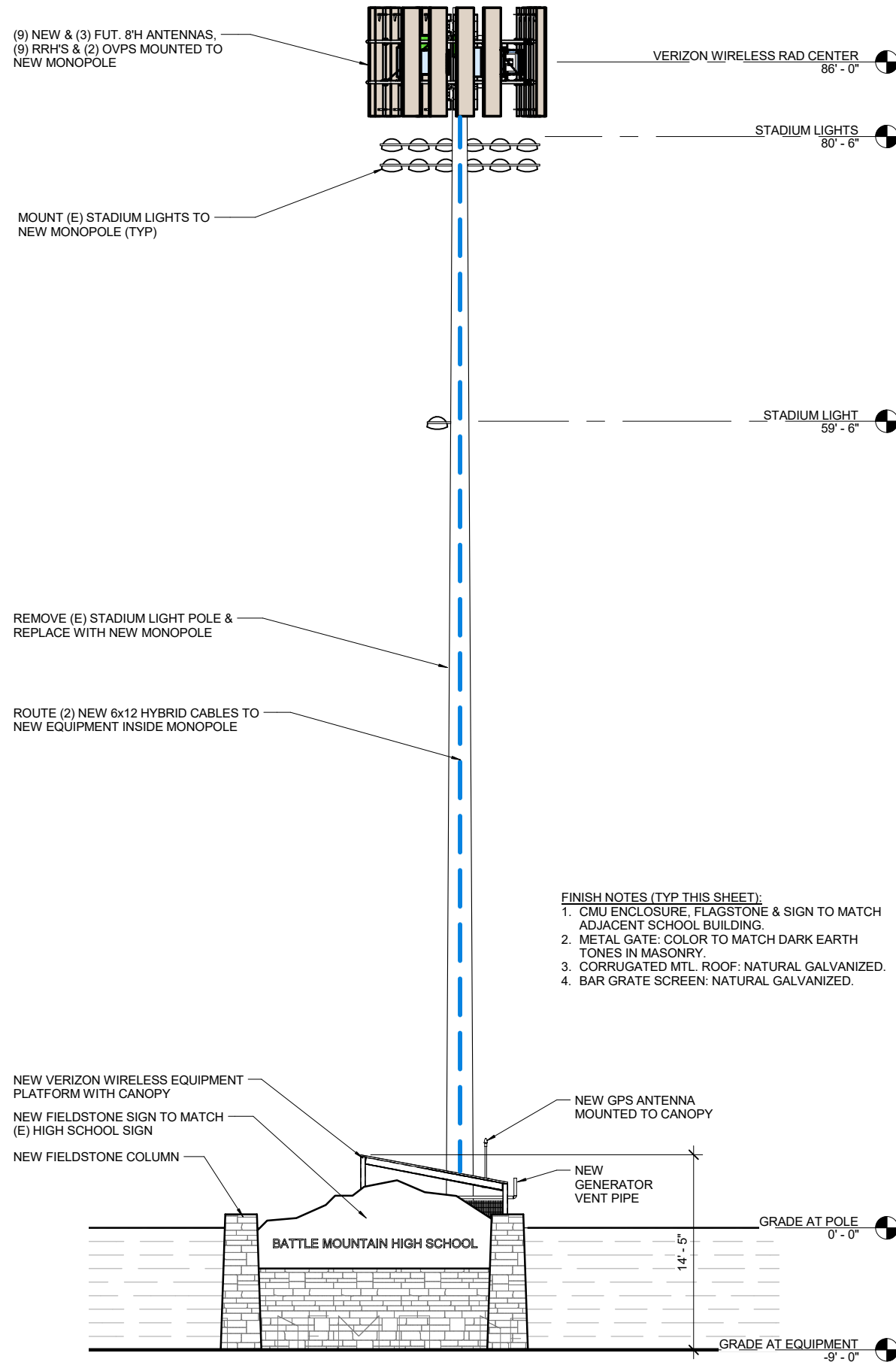
RR/HBBU

PENETRATIONS



2 - SOUTHEAST ELEVATION

3/32" = 1'-0"



1 - NORTHWEST ELEVATION

3/32" = 1'-0"



VERIZON WIRELESS SERVICES  
3131 S. VAUGHN WAY, SUITE 500  
AURORA, CO 80014

PROJECT INFORMATION  
SITE NAME

**CO3 DT EDWARDS**

151 MILLER RANCH ROAD  
EDWARDS, CO 81631

CONSULTANT

A	01/26/17	CONCEPT	ERR
B	02/28/17	ZD REVIEW	ERR

1st REVIEW SB 2nd REVIEW SGP

**CHARLES  
STECKLY**

**ARCHITECTURE**

5935 SOUTH ZANG STREET, SUITE 280  
LITTLETON, COLORADO 80127  
OFFICE: 303.932.9974

**NOT FOR  
CONSTRUCTION**

ELEVATIONS

**A3.1**