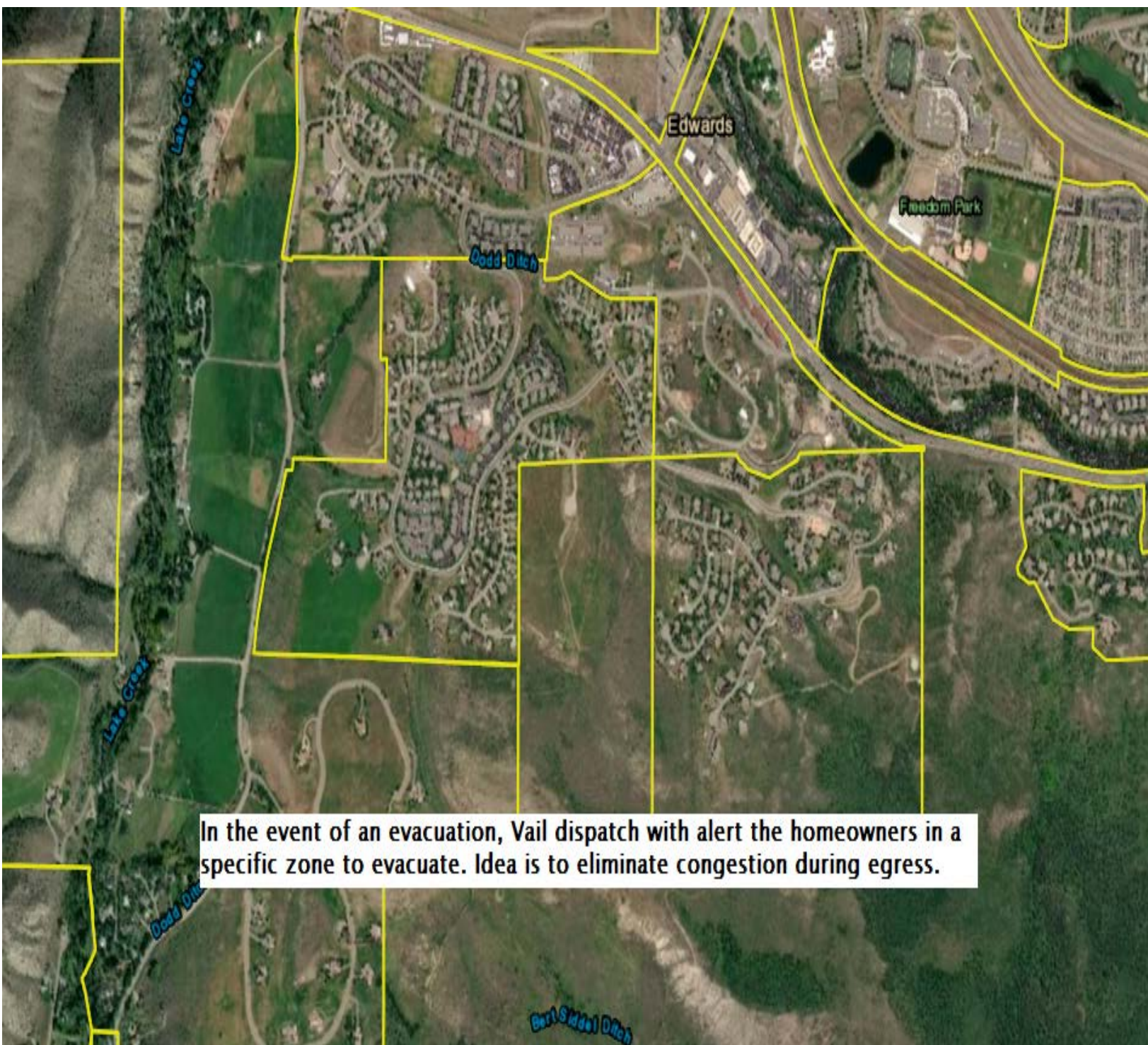
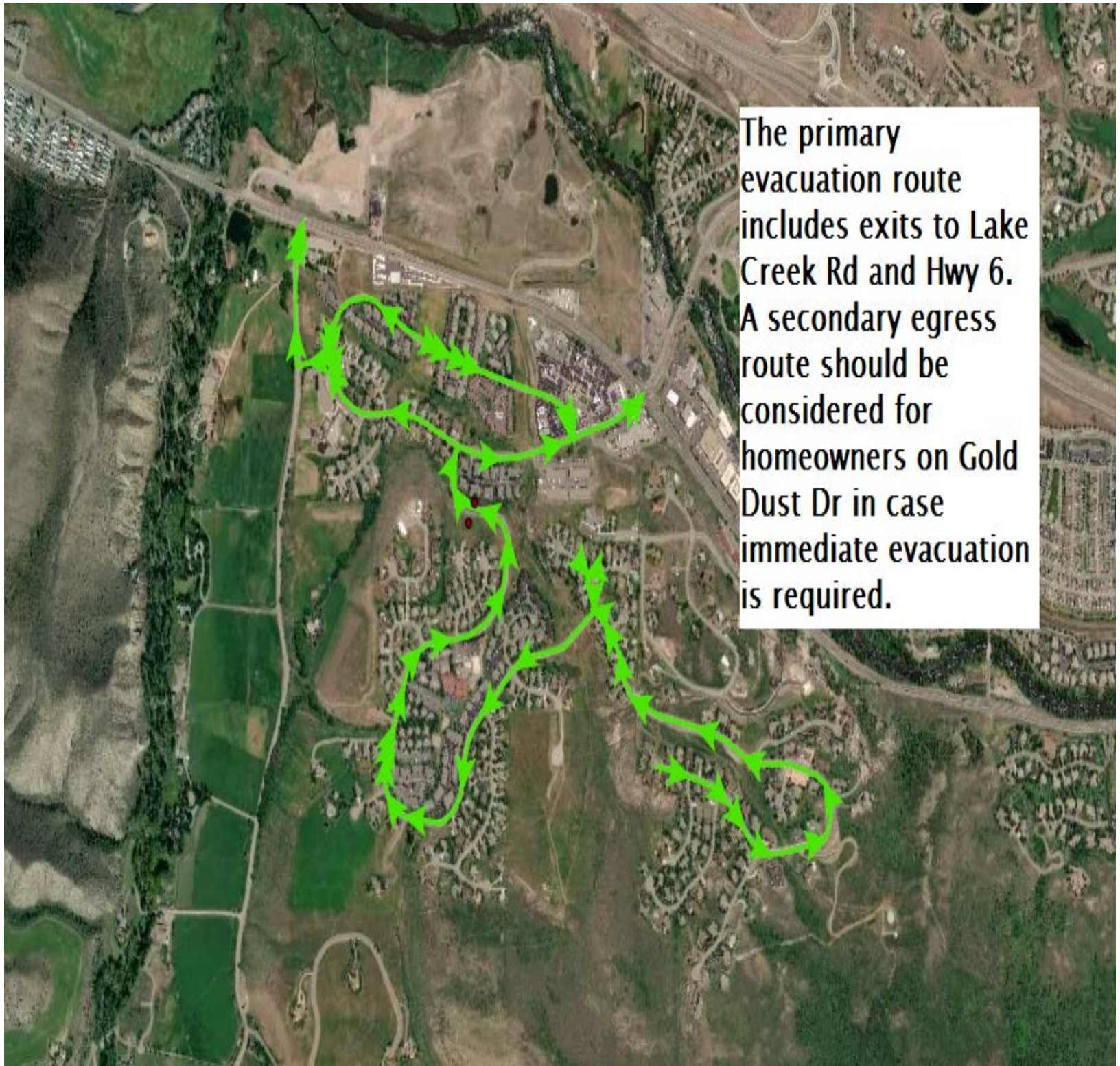


Homestead Evac Zones



Evacuation Route

An aerial photograph of a residential area with a river on the left. A red dot is located in the center of the residential area. Green arrows originate from this dot and follow a path that loops around the residential area, heading towards the top and right edges of the map. The path includes exits to Lake Creek Rd and Hwy 6. A text box on the right side of the map provides details about the primary and secondary evacuation routes.

The primary evacuation route includes exits to Lake Creek Rd and Hwy 6. A secondary egress route should be considered for homeowners on Gold Dust Dr in case immediate evacuation is required.

Homestead

Mitigation Planning Zones



Mitigation Planning Zones - areas indicated (in orange) represent zones that the community should mitigate and maintain. Mitigation and maintenance can help decrease fire intensity and promote defensible space.

HOMESTEAD

Number of Structures	513
Utilities Above or Below Ground	Below; overhead power lines adjacent to community
General Construction	Mostly noncombustible siding; high fire resistant roofs
Average Lot Size	<1 Acre
Home Addresses	Present; non-reflective
Dual Access Roads	One way in/out
Road Widths, Slope, and Surface	20-24'; <5%; paved
Emergency Vehicle Turnarounds	They are at ends of side roads; long, narrow driveways
Water Supply	Hydrants with good pressure
Proximity to Staffed Fire Station	2-3 miles
Other Hazards	High housing density; nearby elementary school

Hazard Rating: Moderate



- ❑ Limited evacuation points. Create secondary egress route off of Gold Dust Drive
- ❑ Fuel Type – Grass, Sage, Spruce, Juniper, Ornamental trees
- ❑ Small narrow drainages run uphill into community
- ❑ Homes lack adequate defensible space
- ❑ Light flashy fuels throughout community can create rapid rates of spread and flame length less than four feet.
- ❑ Home-to-home ignition possible.



HOMESTEAD

Accomplishments

Collaborative effort between the homeowners association, county and fire department to determine future wildfire mitigation needs for the community

Individual home rapid risk assessments have been completed and mapped

Each individual homeowner was notified of their home risk rating

Evacuation Routes and Safety Zones identified, mapped, and distributed.

Home Ignition Zone assessments as well as through the county REALFire program

GIS map



Evacuation map

Mitigation Project(s)



- Secondary Egress
- East and West Linked Defensible Space
- Individual Home and Multi-Family Residence defensible space

Description



- Gold Dust Dr to Lariat Loop
- Link defensible space behind homes on Gold Dust Drive and Cameron Place

Method



- Crew handfelling and limbing; sage treatments, mowing

Acreage



- 8.5