



EDWARDS FIRE STATION FACT SHEET

THE PROBLEM

ERFPD has the responsibility to provide a system that appropriately meets the community's needs for fire protection and emergency response. Growth throughout the District, and especially the Edwards area, is already testing ERFPD's ability to effectively respond, even as it exists today. Any future growth will strain the entire system upon which the community relies.

Edwards Station

- Current building was built as temporary structure in 1985, and was originally intended to serve an area with limited development.
- The building is not structurally sound, and significant capital improvements would be required just to maintain a facility that has long outlasted its intended lifespan.
- The size of the station severely limits the type and number of apparatus which can be housed on-site.

Fire Training Facility

- Closest training facilities are located in Dotsero and Summit County.
- Both locations take companies out of service and unable to respond.
- Firefighters need to constantly train on mission-critical skills, while remaining available for emergency response.

THE PROCESS

On May 3, 2016, District voters approved the issuance of \$25 million in general obligation bonds to fund ERFPD's portion of a Joint Public Safety Facility in Avon, and to construct a larger, more modern station in Edwards and a much-needed fire training facility.

- ERFPD took into account the scarcity of suitable land, which will most likely grow even scarcer and more expensive.
- After researching and evaluating suitable locations for several years (26 in the Edwards area, alone), ERFPD has determined it is more cost-effective to build fewer fire stations, utilizing land it already owns.
- Lot limitations required an initial fire station design that was attached to the Eagle County Paramedic Services building, which constrained fire engine and ambulance operations and incurred additional cost.
- In June of 2016, the District purchased Tract K, directly adjacent to the property on which the current station is located, and was nearly offset by construction savings associated with the original design.
- ERFPD is currently in the process of developing and evaluating additional design options, which will be vetted by the Board, based on public input and construction price estimates.

THE DESIGN

Initial design and site layout were presented to the public at an Open House on February 22, 2017. Based on public input, the following changes were made and presented to the ERFPD Board at a special meeting on March 6, 2017.

- The hose tower element on the fire station building was originally designed at 44 feet in height; that height has been reduced to 38 feet (6 feet shorter or almost 15% reduction in height). The footprint of

Eagle River Fire Protection District is a professional fire service agency and proudly serves Tennessee Pass, Camp Hale, Red Cliff, Minturn, EagleVail, Avon, Mountain Star, Wildridge, Beaver Creek (by contractual agreement), Bachelor Gulch, Arrowhead, Homestead, Edwards, Lake Creek, Singletree, Pilgrim Downs, Cordillera, Bellyache Ridge, Red Sky Ranch and associated portions of I-70, Hwy 6 & 24.

the station was reduced by 40 feet in length; the size of the building was original proposed at 23,000sf and is now approximately 19,000sf. This is a reduction of roughly 4,000sf or nearly 20% of the building.

- The resulting design will house a single engine company. It allows for an addition of second company in the future if required by growth in the area and increased call volume. This provides the District greater flexibility to add a second company when warranted, yet accommodate existing apparatus housing needs.
- Based on community input, the training facility was moved east as far as possible while still ensuring appropriate access by fire apparatus. The building will be screened to the north and west with significant landscaping and trees. The parking area has also been moved east to create a landscape buffer to the adjacent open space parcel owned by the Homestead HOA and bike path owned by Eagle County.
- The District will be installing an irrigation/storm pipe to accommodate water from the existing Dodd irrigation ditch. Although the property is not in a flood plain, the pipe will be engineered to carry 1.5 times the amount of storm water projected during a 100-year flood event in addition to the irrigation flows. ERFPD will maintain access for maintenance and downstream irrigation users are being notified of the proposed piped condition.

NEXT STEPS

- At the March 6, 2017 special meeting, the ERFPD Board directed staff to move forward into design development documents for pricing purposes.
- The District anticipates presenting the plans to the Eagle County Planning Commission through a Location and Extent application sometime in April or May.
- Groundbreaking is tentatively scheduled for mid-summer of 2017, with completion anticipated in 12-13 months, barring any unforeseen circumstances.
- The Fire District continues to welcome public comment; please send comments or questions to: Tracy LeClair, (970) 736-3103 or tclair@eagleriverfire.org.

The following pages include architectural plans and design renderings that were presented to the Fire District Board at the March 6, 2017 special meeting and are still subject to change.

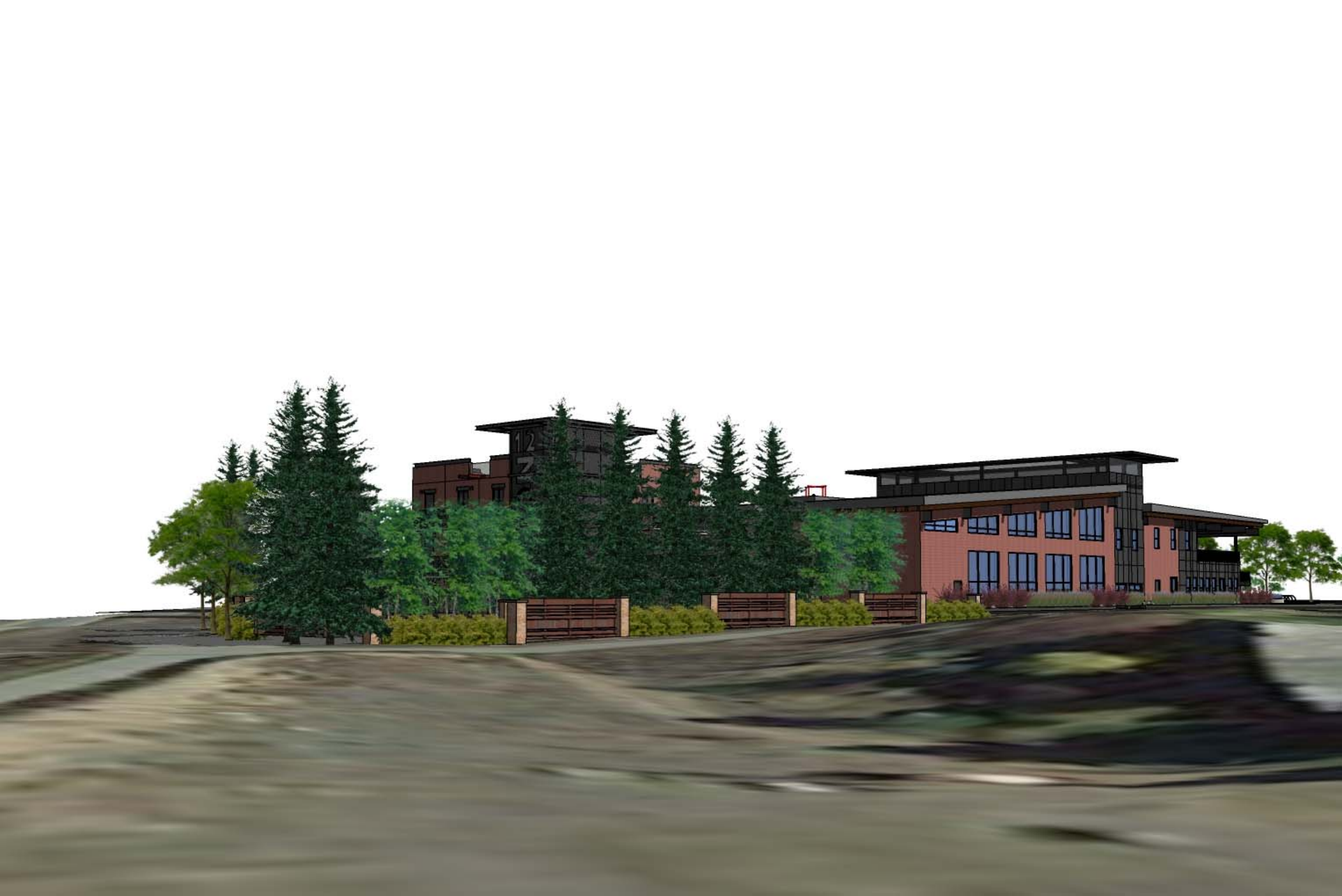




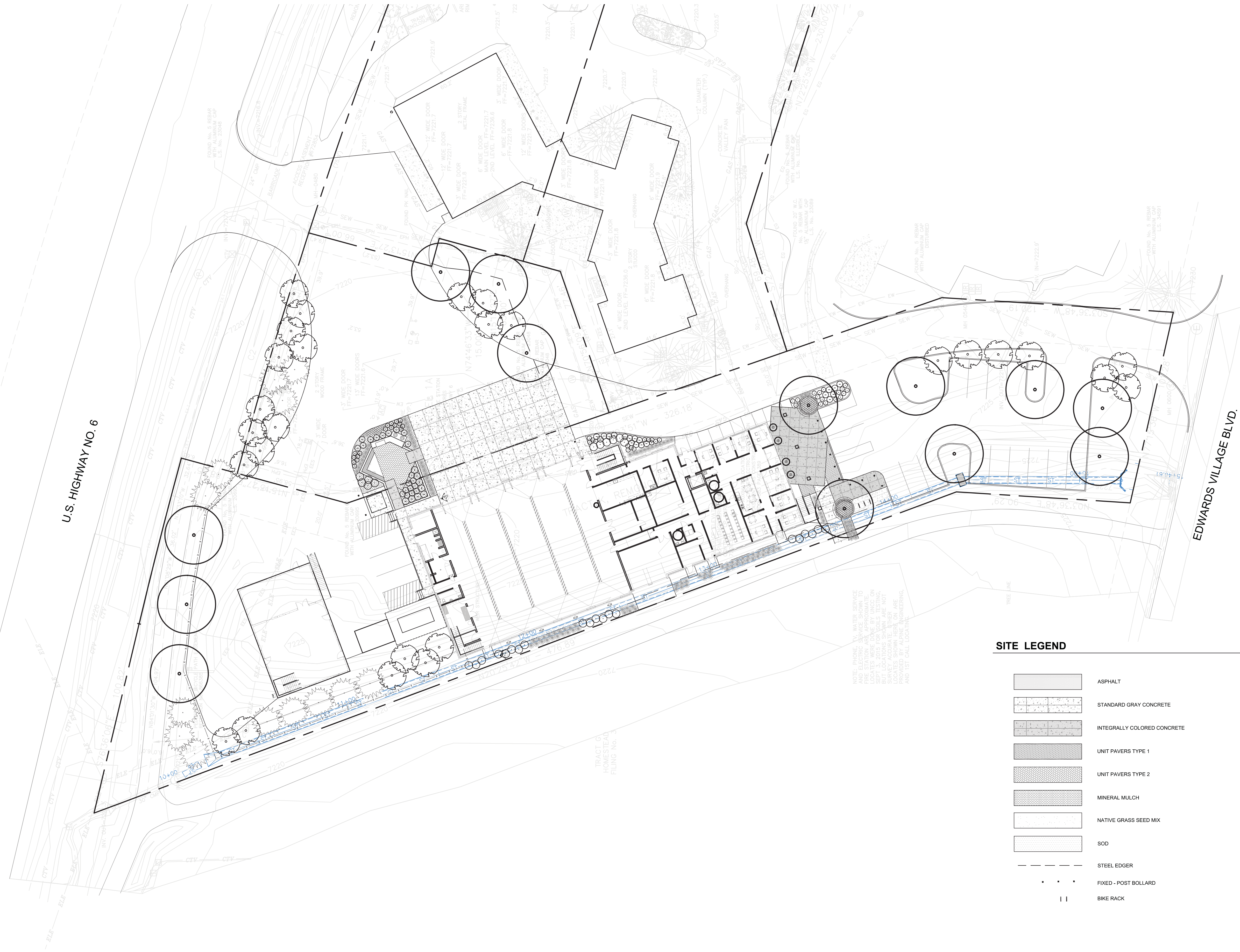






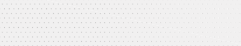





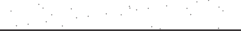
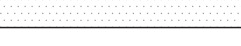







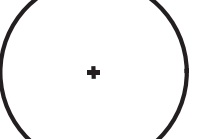







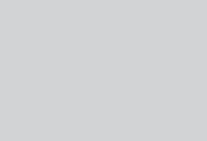


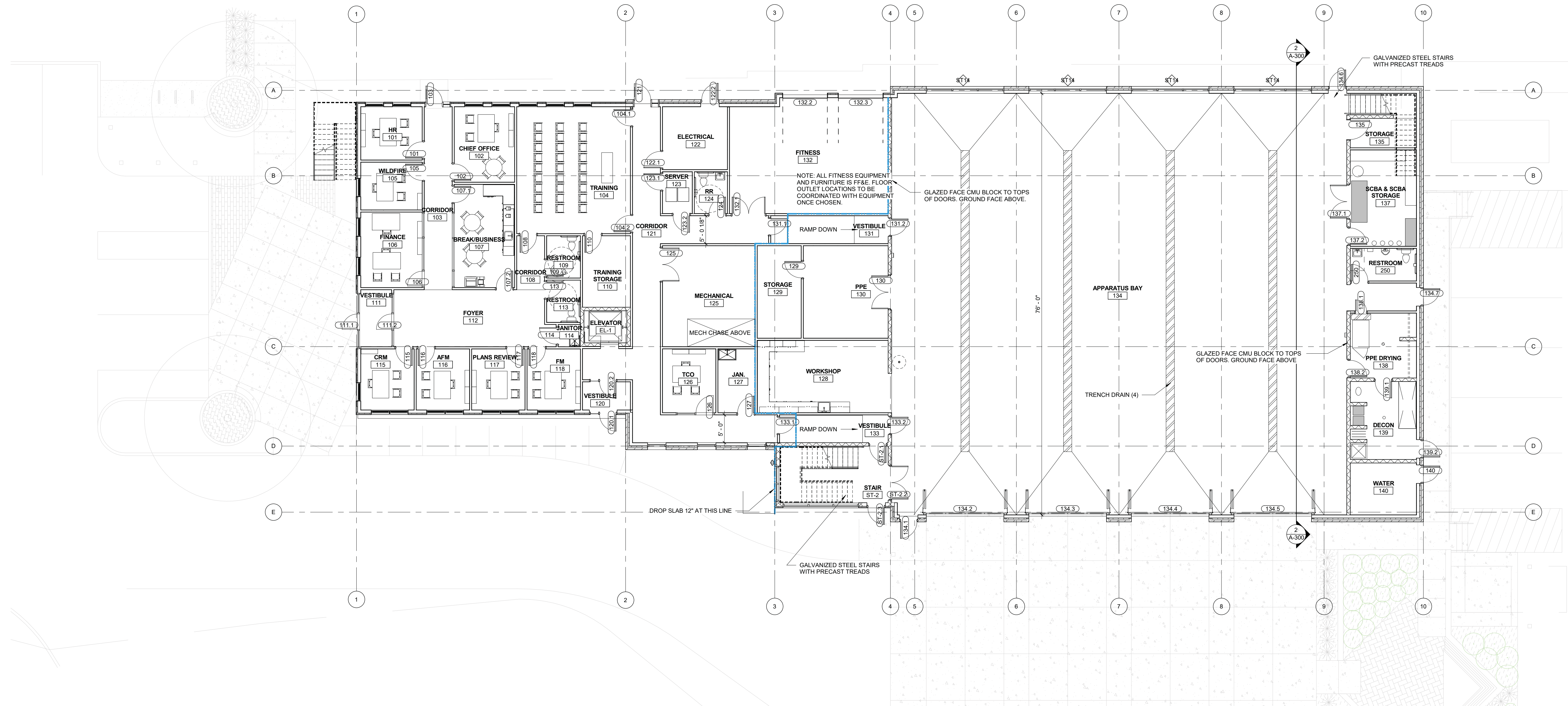
NOTE: FINISH GRADE, WATER SERVICE, FIRE STATION AND APPROXIMATE SEPTIC TANK LOCATIONS SHOWN. BUT LOCATIONS SHOWN ARE NOT PROVIDED BY PLANS ENGINEERING AND NOT TO BE CONSIDERED.

SITE LEGEND

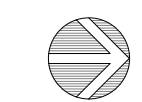
-  ASPHALT
-  STANDARD GRAY CONCRETE
-  INTEGRALLY COLORED CONCRETE
-  UNIT PAVERS TYPE 1
-  UNIT PAVERS TYPE 2
-  MINERAL MULCH
-  NATIVE GRASS SEED MIX
-  SOD
-  STEEL EDGER
-  FIXED - POST BOLLARD
-  BIKE RACK

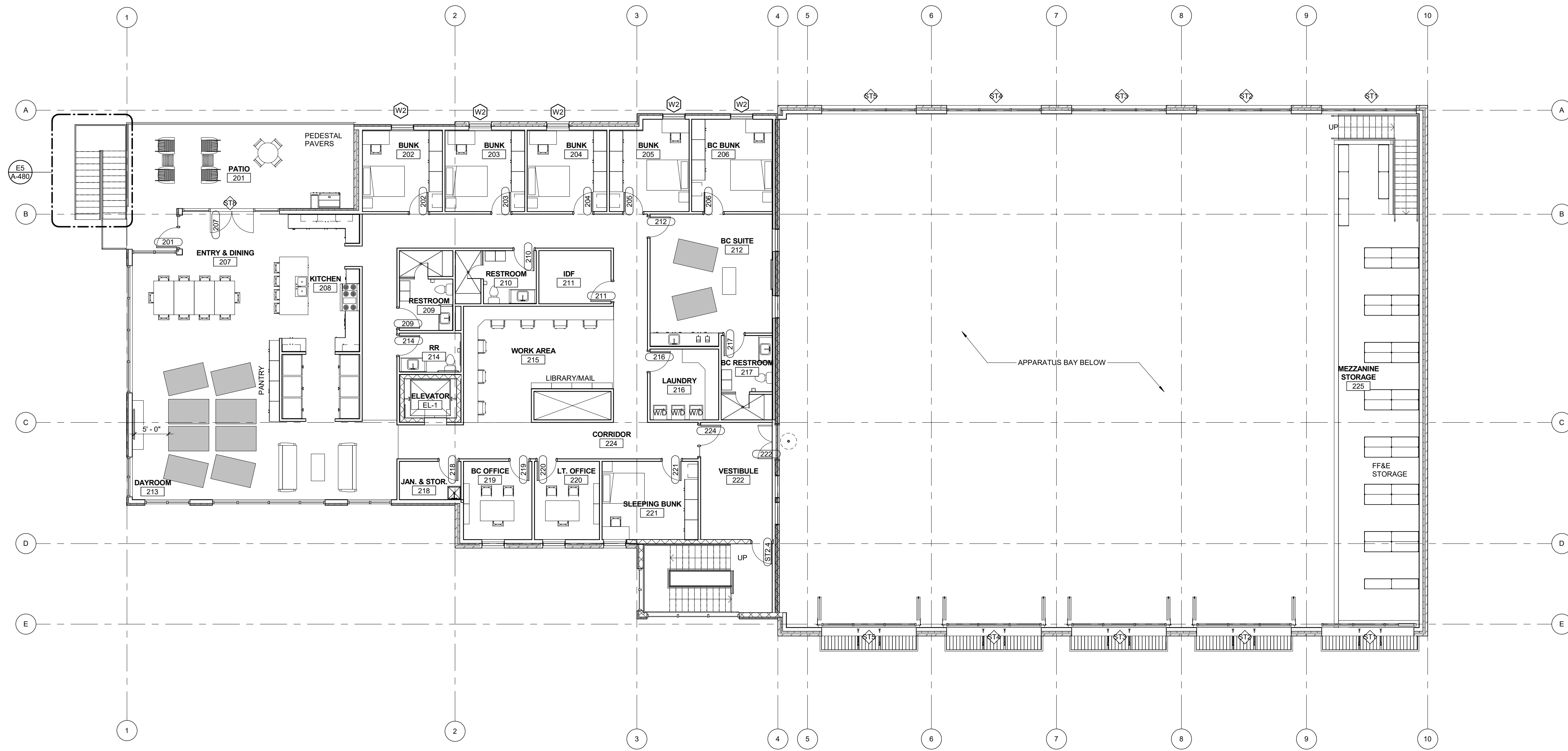
PLANTING LEGEND

-  DECIDUOUS TREES 2" CALIPER OR AS NOTED ON PLANS
-  EVERGREEN TREES 10' - 12' TALL
-  ORNAMENTAL TREES 2" CALIPER
-  DECIDUOUS SHRUBS 5 GAL.
-  EVERGREEN SHRUBS 5 GAL.
-  ORNAMENTAL GRASSES 1 GAL.
-  PERENNIALS
-  IRRIGATED SOD
-  IRRIGATED NATIVE SEED



1 LEVEL 1 - FIRE STATION
1/8" = 1'-0"



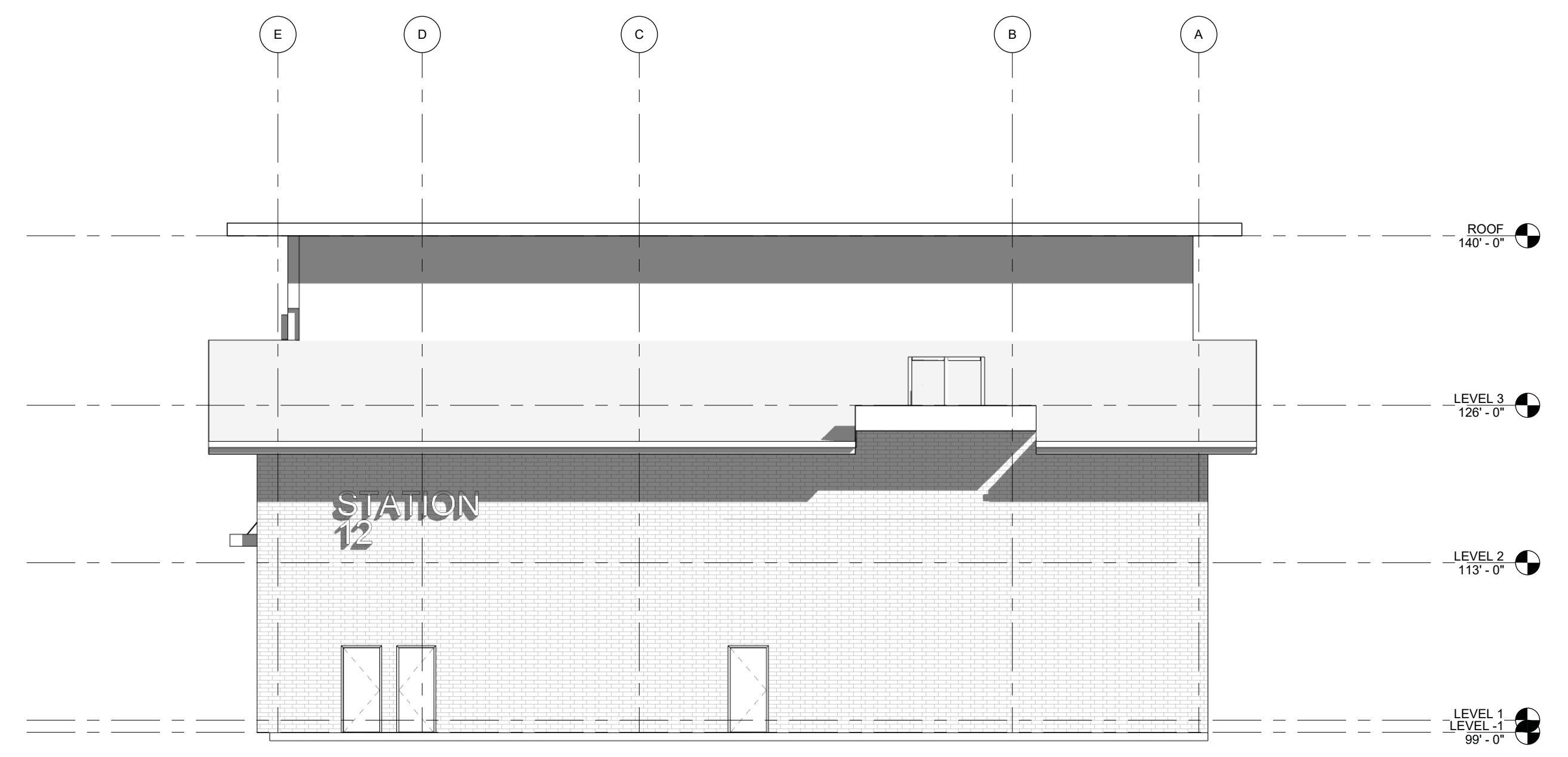


1 LEVEL 2 - FIRE STATION
1/8" = 1'-0"

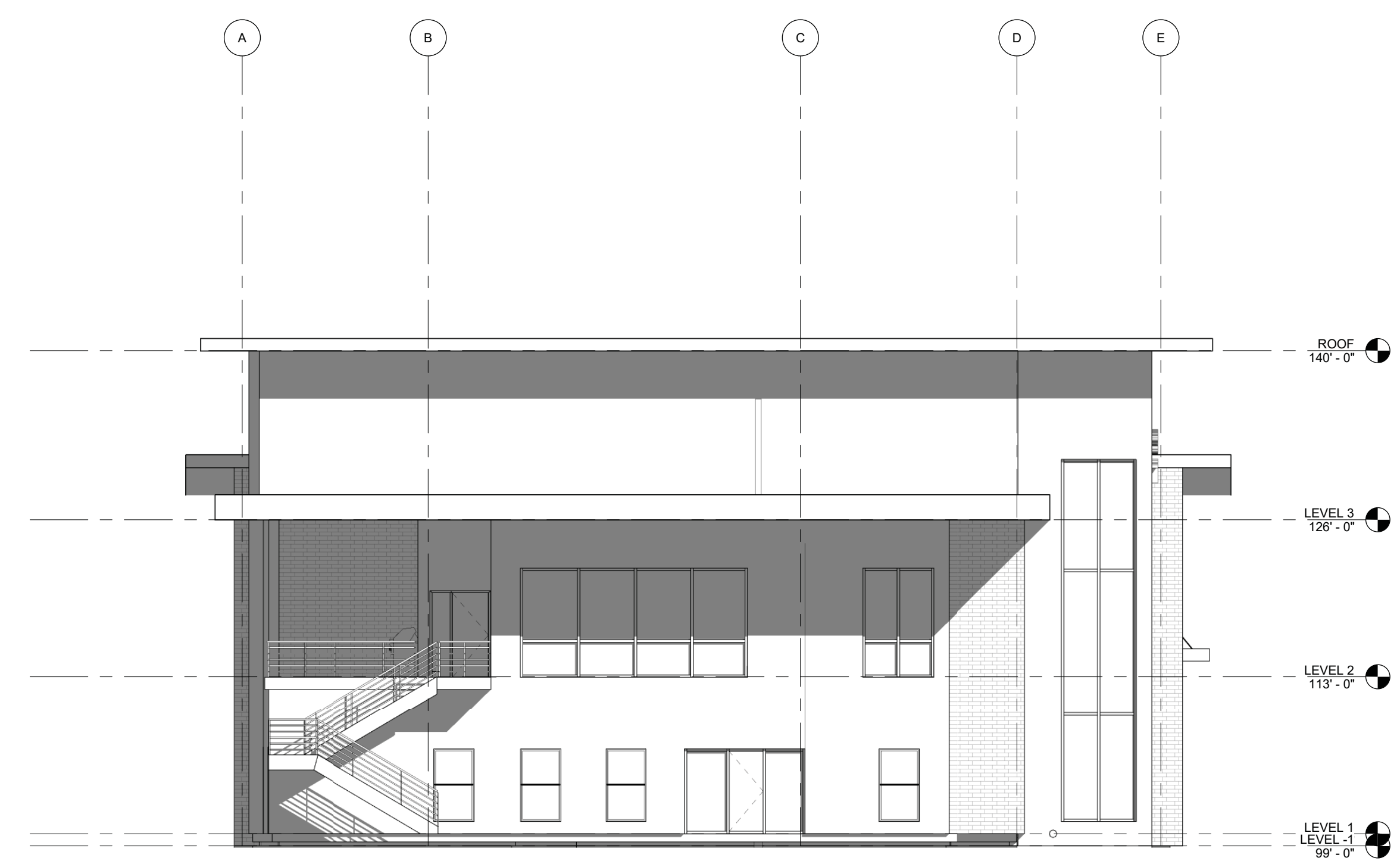




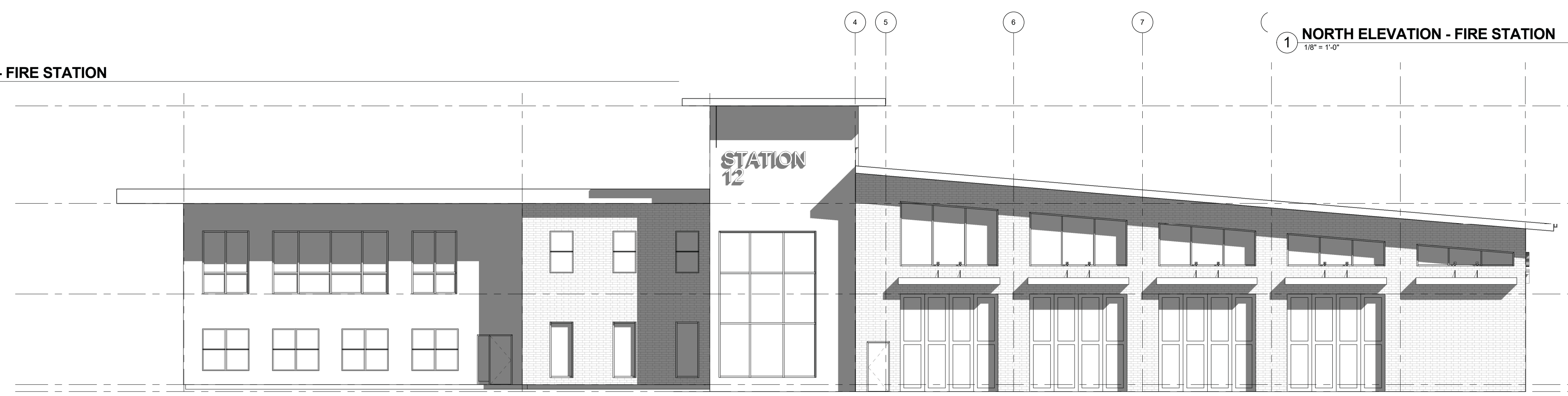
2 WEST ELEVATION - FIRE STATION
1/8" = 1'-0"



1 SOUTH ELEVATION - FIRE STATION
1/8" = 1'-0"



1 NORTH ELEVATION - FIRE STATION
1/8" = 1'-0"



2 EAST ELEVATION - FIRE STATION
1/8" = 1'-0"