

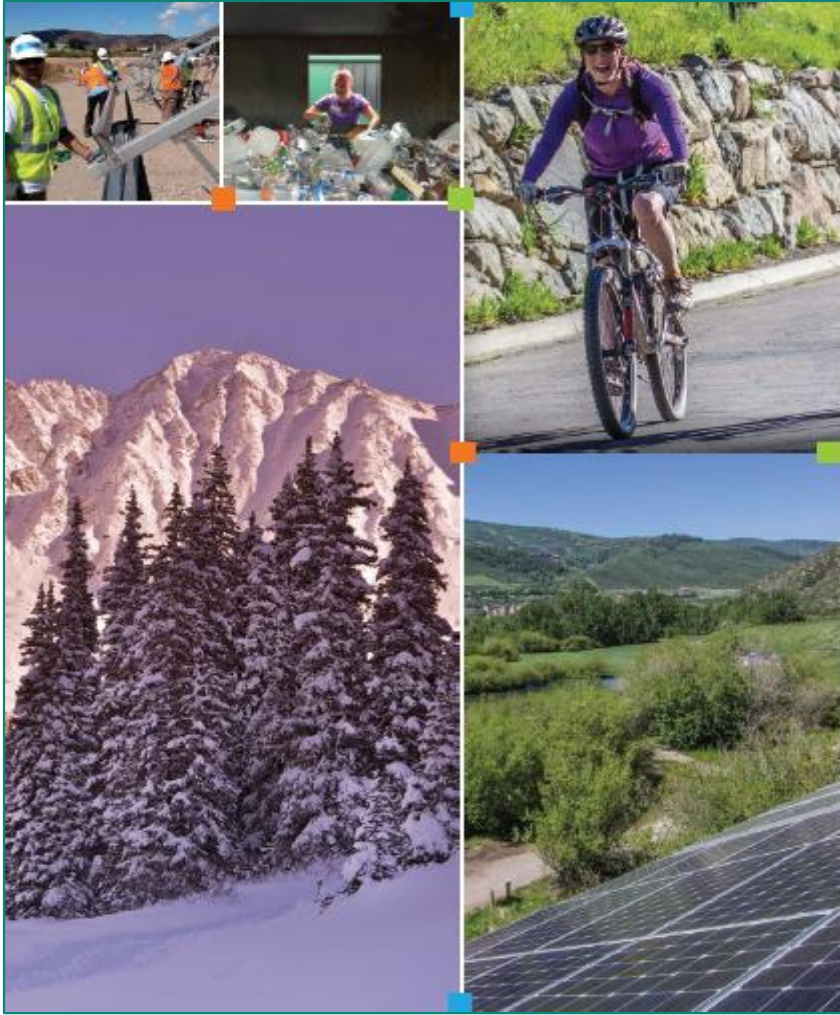
Climate Action Collaborative

for the Eagle County
Community



CLIMATE
ACTION
COLLABORATIVE

The Climate Action Plan for the Eagle County Community



CLIMATE ACTION PLAN



FOR THE
EAGLE COUNTY
COMMUNITY

December 2016



Reduce local carbon emissions

25% by 2025
and
80% by 2050

Climate Action Partners



R&H MECHANICAL



TOWN OF BASALT



TOWN OF MINTURN

TOWN OF RED CLIFF



VAIL RESORTS



Sector Working Groups



Education
& Outreach



Built Environment
Residential & Commercial



Energy
Grid & Renewable



Waste
Materials Management



Transportation
Fuel Emissions

Working groups are established for Buildings, Transportation, Waste, Energy Supply, and Education & Outreach.

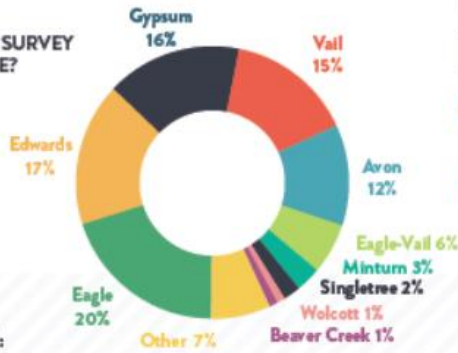
Each group is made up of community experts in each field, who work together to implement community-scale sustainability projects

**New this year – Citizens
Working Group and Water
Working Group**

Climate Action Community Survey Results

In 2018 the Climate Action Collaborative asked the Eagle County community to participate in a Climate Action survey to understand the attitude on climate change locally. The survey asked community members to comment on the sustainability actions they already participate in and what future sustainability efforts they would be in support of. The results of this survey demonstrate that our community is to act on climate change and is supportive of local efforts to do so!

WHERE DO SURVEY TAKERS LIVE?



SURVEY RESPONDERS WERE SUPPORTIVE OF LOCAL EFFORTS TO:

promote climate change education and promote sustainable practices in local schools

engage school children and their families to create future environmental stewards

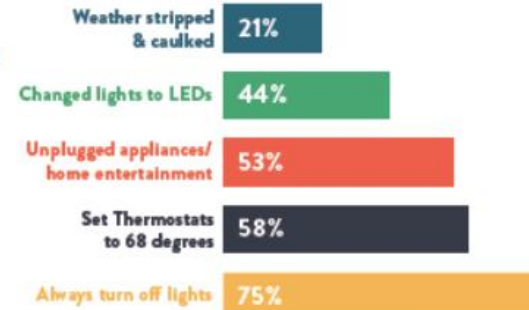
provide incentives to landlords to use more energy efficient appliance

promote sustainable water use in hotels

86% THINK LOCAL GOVERNMENTS NEED TO ACT ON CLIMATE CHANGE



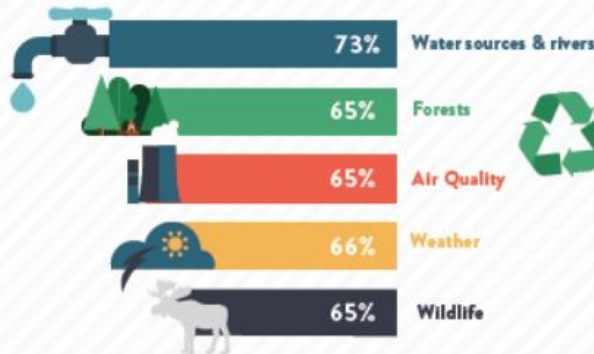
WHAT DID YOU DO AT YOUR HOME?



SURVEY TAKERS ALWAYS RECYCLE:



CONCERN FOR RESOURCES?



RECYCLING

don't know how a lot of effort no recycling at apartment no space



BIGGEST BARRIERS

ENERGY EFFICIENCY

someone else is in charge of maintaining the residence and they can't afford to fix it



How are GHG (Carbon) Emissions Measured?

Waste - measured by the amount of waste going to the landfill + percentage of that waste that was 'once alive'

Transportation - measured in vehicle miles traveled + the type of vehicle traveling those miles

Aviation - airplane fuel sold within Eagle County

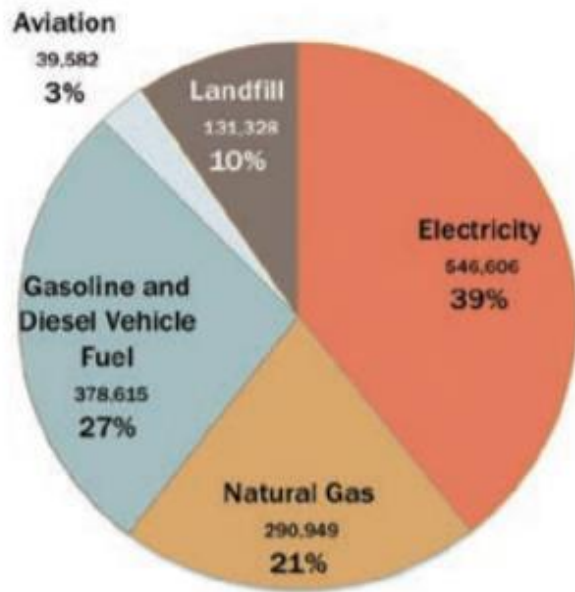
Buildings - measured by the amount of natural gas and electricity residential and commercial buildings uses

Electricity - % of renewable energy supplied to the grid

Natural Gas – emissions from burning natural gas

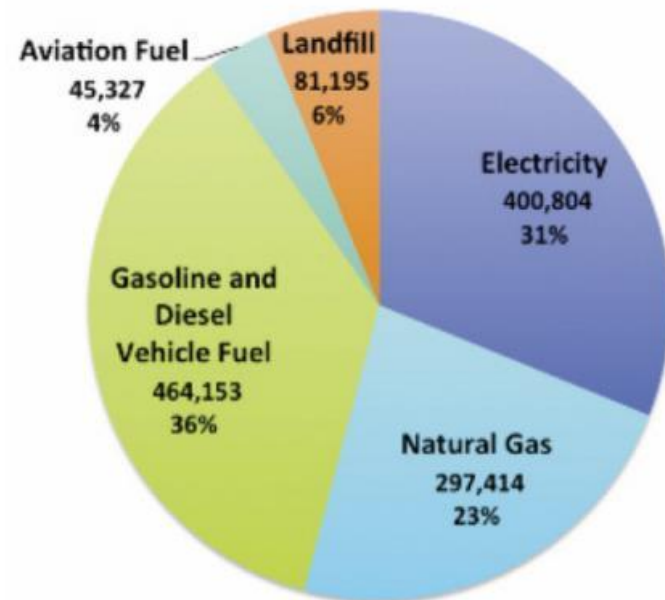
GHG Inventory

3. Emissions by Source, 2014 Metric tons of CO₂e



1.4 M metric tons
CO₂e

4. Emissions by Source, 2017 Metric tons of CO₂e



1.28 M metric tons
CO₂e

Key Takeaways

Good news - we're moving in the right direction - GHG reduced slightly. Thanks to Western Colorado State University for providing the tools to track our results, and forecast the results of strategies moving forward.

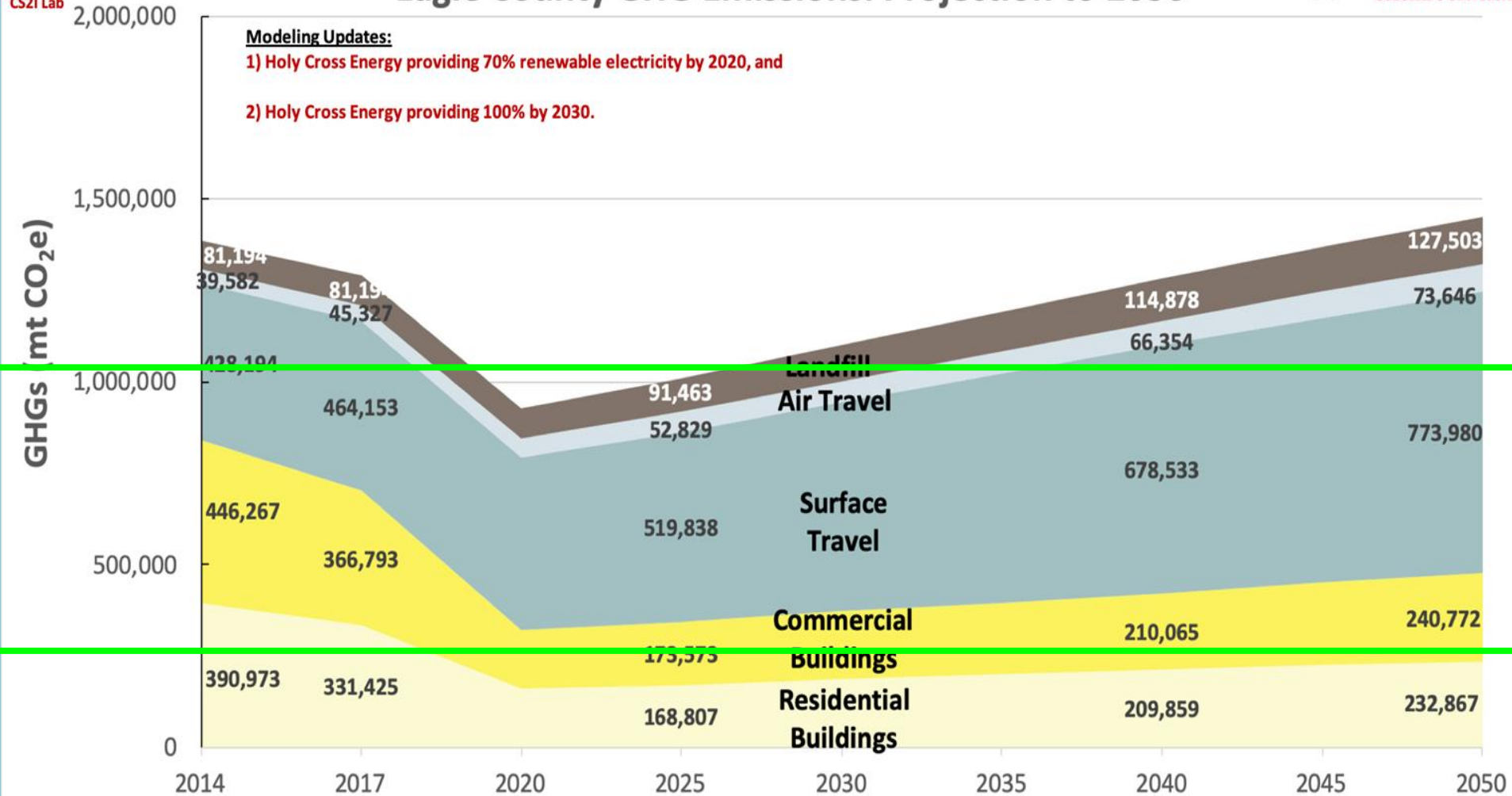
- Reduction so far is mostly from power supply - HCE + Xcel emissions factor.
- We need to continue GHG reduction efforts in landfill and buildings
- **But.. Transportation is #1 target** - the biggest emissions source, and growing. Also the most difficult to change - all communities share this same problem

Key
Takeaways

21% reduction in carbon emissions required between now and **2025** to reach our goals

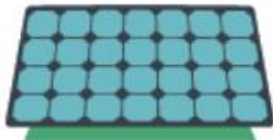
We have a long way to go!

Eagle County GHG Emissions: Projection to 2050



2018 Impact Report

COMMUNITY IMPACT HIGHLIGHTS



Rebates for rooftop solar through Walking Mountains Energy Programs

DOUBLED

**HOLY CROSS ENERGY
COMMITTS TO ACHIEVING
70% RENEWABLE ENERGY
SOURCES BY 2021**



**ELECTRIC
BIKE SHARE
SYSTEM**
e-assist bike demo



Eagle County
hosted a 3-month
**Electric Vehicle
Sales Event**
with regional partners

Holy Cross provided
FREE EV chargers
for homes and businesses



Town of Avon
BANS
plastic bags

US GREEN BUILDING COUNCIL
*starts new chapter in Eagle Valley
to engage local builders in green
building best practices.*



AVAILABLE TO ALL
EAGLE COUNTY RESIDENTS



CONSTRUCTION + DEMOLITION TEXTILE RECYCLING
COMPOST



LOCAL GOVERNMENT ENERGY ACADEMY
FROM COLORADO STATE UNIVERSITY

HOSTS 2-DAY WORKSHOP
IN EAGLE COUNTY



**WASTE
WIZARD**
EAGLE COUNTY
RECYCLING APP
LAUNCH



- 61** Certified Businesses
- 28** Pursuing Certification
- 46%** of waste diverted from landfill
- 17%** of total business energy use came from renewable energy

All actively green businesses report on energy use, water use, and vehicle mileage, and each has a goal to improve over time.

**CARBON REDUCTION
AWARD 2018**

**EAGLE RIVER
FOOD BANK**

Diverts food waste from our local grocery stores, which was headed to the landfill. They package the food and bring it to neighborhoods around the valley who are food insecure. They compost whatever they cannot pass out, and therefore save huge amounts of food from going to the landfill!

TOTAL CO2 EMISSIONS IMPACT:

2,108 tons of CO₂e through Energy Smart

21.5 tons of CO₂e through Sole Power

14.10 tons of CO₂e through LED Swaps

2,143.6 TONS of CO₂e
ELIMINATED = 455 cars taken off the road
= 257 homes annual energy use

What we've accomplished

- ✓ Accelerated the climate conversation in the valley
- ✓ Expansion of or creation of new sustainability departments or positions with partner entities
- ✓ County-wide collaboration on outreach and education efforts
- ✓ Connecting partners to resources
- ✓ Connecting entities to work on co-beneficial projects



Focus Areas

- #1 Waste: Education & Infrastructure
- #2 Energy Efficiency in Buildings
- #3 Multi-modal Transportation
- #4 Behavior Change
- #5 Renewable Energy

Waste: Education & Infrastructure

Education

1. Eagle County Waste Wizard was launched
2. Bi-Annual Recycling Guide for Eagle County

Infrastructure

1. Textile, Compost, Construction & Demolition Diversion Opportunities

Looking Ahead...

Standardized signage for public recycling bins

Reducing single-use waste at major events

School recycling programs

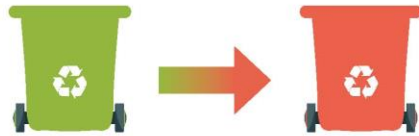
Send your waste
to a better place

eagle county
waste
wizard



Be Better At Recycling

WHY? One bad bin can contaminate a truck of good bins.
When in doubt, check the Eagle County Waste Wizard App.



Put In Your Recycling Bin



Don't Put in the Recycling Bin It Goes Somewhere Else!

- Electronic-Waste
- Greasy Pizza Boxes *compost if you can!*
- Large metal
- CFL Light Bulbs
- Syringes & Needles
- Textiles

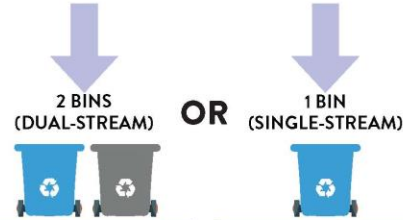
Check the **Waste Wizard** app on where to take these items in the county.

Never Put in Your Recycling Bin

- Plastic Bags *don't bag your recyclables*
- Broken Stemware or Ceramics
- Small Plastics *utensils, cold/hot drink lids, dressing cups*
- #7 PLA Plastic
- Styrofoam

To recycle right, start here:

HOW DO YOU RECYCLE AT HOME?
DO YOU PUT YOUR RECYCLING IN...



Dual-stream (2 bins) recycling requires that you separate your plastics, glass, cans, bottles from the paper and cardboard. In dual-stream, cardboard is not collected curbside and should be taken to a drop-site.

- > COMMUNITY DROP-SITE
- > VAIL HONEYWAGON in the communities of: TOWN OF EAGLE TOWN OF MINTURN ARROWHEAD

Single-stream (1 bin) recycling allows you to put all recyclables into the same bin.

Note that most businesses use single-stream.

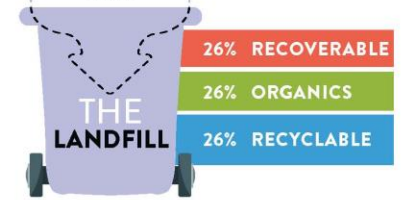
- > VAIL VALLEY WASTE
- > WASTE MANAGEMENT
- > VAIL HONEYWAGON all other residential pick up aside from the dual stream communities on left.

IT'S TRICKY

- these items depend on your stream-
check the **Waste Wizard App** for answers

- Aseptic Cartons *juice and milk cartons*
- Cardboard
- Clam-shell containers *plastic fruit & veggies containers*
- Plastic cups
- Shredded Paper
- Starbucks/other hot cups
- Tin Foil *clean and balled up*

90%
OF YOUR WASTE
CAN BE DIVERTED FROM



CURRENT RECYCLING RATES



ClimateActionCollaborative.org
#BeBetterTogether

The Eagle County Waste Wizard is Your Free Recycling App



Ask the Waste Wizard at
walkingmountains.org/recycle



CLIMATE ACTION COLLABORATIVE
walking mountains sustainability

Energy Efficiency in Buildings

New Construction

1. Building Code Task Force - Above building code standards

Existing Buildings

1. LED Swaps for residents
2. Benchmarking large commercial buildings
3. Expansion of EnergySmart programs

Looking Ahead...

Incorporation of above building code standards

Promotion of all-electric heating systems + new tech

Multi-Modal Transportation

1. E-Bike Demo
2. Deployment of EV fast-charging stations in every town in the County
3. Expansion of Zagster Bike Share
4. Coordinated Information Hub with Avon, Vail, Beaver Creek, and ECO Transit – coming end of 2019

Looking Ahead...

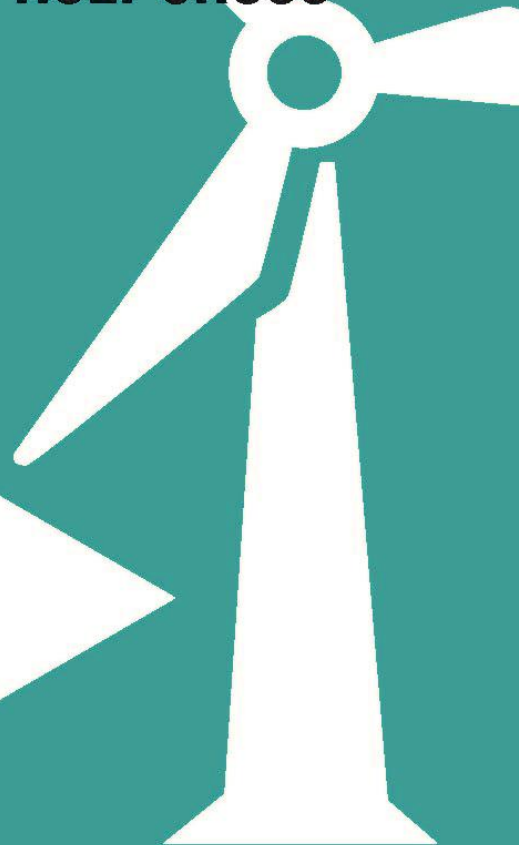
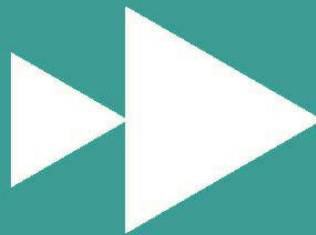
Mobile/online payment system for ECO transit

E-Bike Share Pilot with Town of Vail

Renewable
Electricity

RENEWABLE IS THE FUTURE

SWITCH WITH HOLY CROSS



WALKINGMOUNTAINS.ORG/RECCALC

CLIMATE
ACTION
COLLABORATIVE



walking mountains
sustainability

100% Renewable Electricity Commitments

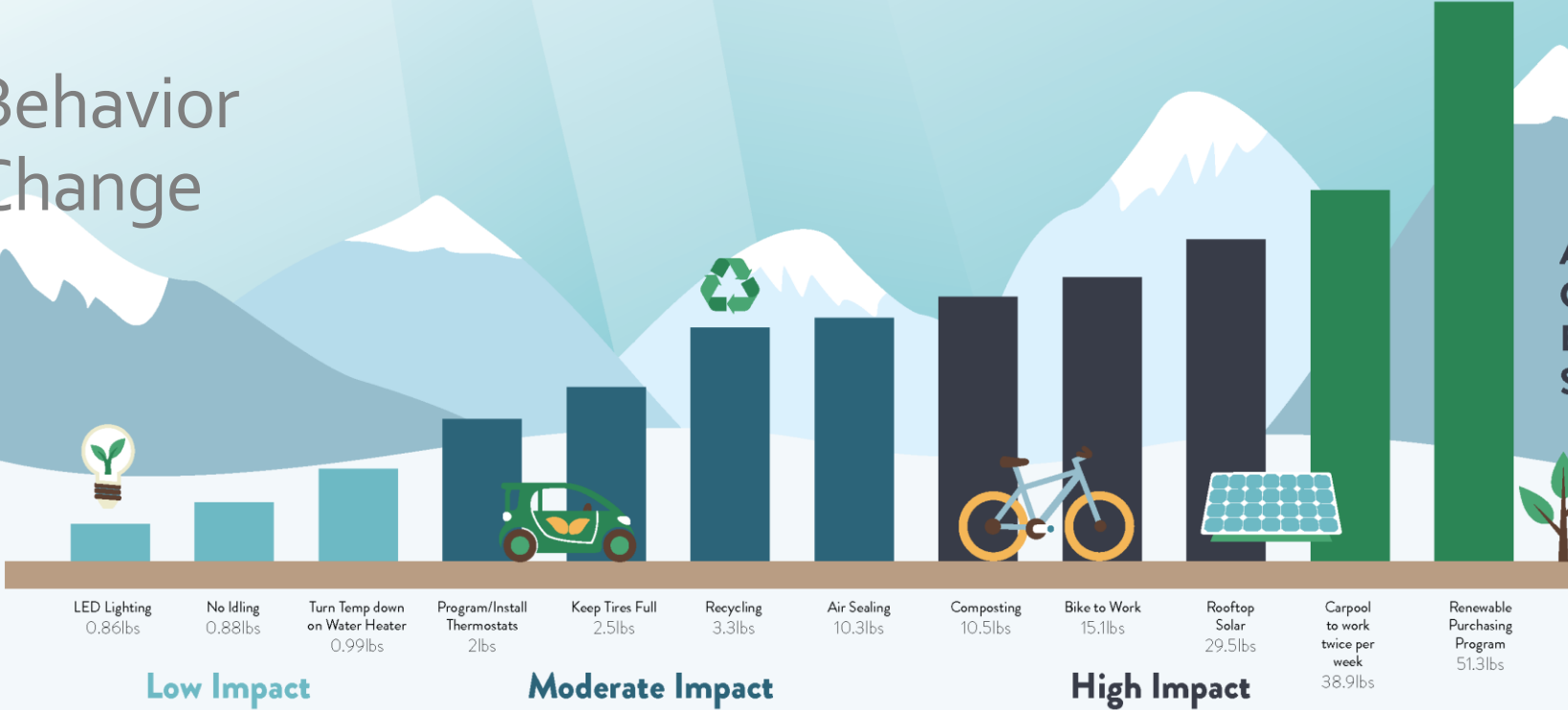
- Town of Vail
- Town of Avon
- Eagle County
- Eagle River Water & Sanitation District
- Town of Minturn (Xcel)
- **As of last week, Town of Eagle!**

Participation has increased 300% in 2019

How do your actions stack up?

Behavior Change

Annual Carbon Emission Savings



Behavior Change Campaign

Goal To get Eagle County residents out of their car 2x per week

Milestone 1 Community transportation survey to understand values related to commuting behavior

Milestone 2 Business engagement: adoption of incentives/programs/policies to support alternative commuting for employees

Milestone 3 Launch a community-wide social marketing campaign

Milestone 4 Incorporate carpooling, bus, and other alt commuting incentives/programs in the community. i.e. discounted parking rates for carpools

Thank you!

Questions?

The logo for Climate Action Collaborative is centered within a white square frame. It features the words "CLIMATE", "ACTION", and "COLLABORATIVE" stacked vertically in a bold, white, sans-serif font. The letter "O" in "ACTION" is replaced by a stylized sun icon with radiating lines. The background of the logo is a scenic landscape of mountains and a lake at sunset, with the scene mirrored in the water below.

CLIMATE
ACTION
COLLABORATIVE

#BeBetterTogether