



EVERYONE DESERVES A TERRIFIC PLACE TO LIVE



SITUATION

There's a shortage of quality rental apartment homes in the Vail Valley.



SITUATION

Colorado's High Country housing barrier for workers has led this past year to doubled wait times for buses, grocery stores closing early, pharmacies no longer open on weekends, and shortages of teachers, nurses, dispatchers and first responders.

A tipping point may be near where labor shortages must be addressed because well-heeled visitors expect services. Finding room for locals will be necessary to maintain the attractions that draw visitors in the first place, Bowes said.

*Bruce Finley
The Denver Post*

SITUATION

“When there is nowhere to live, there is no one to work. When there is no one to work, there is a significant drop in service and selection.”

Proprietor
The Bookworm of Edwards
Vail Daily

TEAM

east west partners



KEPHART

community ■ planning ■ architecture



TEAM

- East West Partners has been a major employer in the Vail Valley for over 30 years and known for “Creating Terrific Places”.



east west partners

TEAM

Eagle Ranch Community



east west partners

TEAM

Riverfront Village, Avon



east west partners

TEAM

- ◀ KEPHART, a Colorado-based architectural design firm, has been designing award-winning communities for nearly 50 years.



KEPHART

community ■ planning ■ architecture

TEAM

- ◀ ZEHREN combines their deep expertise in architecture, planning and landscapes in mountain communities.



TEAM

- ENERGETICS is a boutique energy and daylighting consulting firm just outside of Denver, Colorado specializing in energy and daylight modeling and consulting for green certification programs and sustainability.



LOCATION



ALIGNMENT WITH EDWARDS AREA COMMUNITY PLAN



MISSION

To develop a terrific, new sustainable apartment community with modern amenities in the heart of Edwards that gives back to Eagle County residents by providing them well-designed living opportunities and communal spaces to enjoy and connect with others and the outdoors.



CELEBRATE THE OUTDOORS

- Outdoor living spaces and places to relax, walk, and bike right outside the door, including cozy courtyards and easy access to Eagle River Preserve and the Eagle County ECO trail system.



TRANSIT-CENTRIC



- ◀ Bring to Edwards a pedestrian-oriented development that is safe and easy for residents to walk, bike and ride public transportation.

CONNECTED TO THE COMMUNITY

- ◆ Residents will support community restaurants, shops, and service providers year-round.



HAPPY RESIDENTS

- ◀ Ensure a long-term enjoyable living experience.



PRELIMINARY DESIGN CONCEPT



PRELIMINARY DESIGN CONCEPT



PRELIMINARY DESIGN CONCEPT



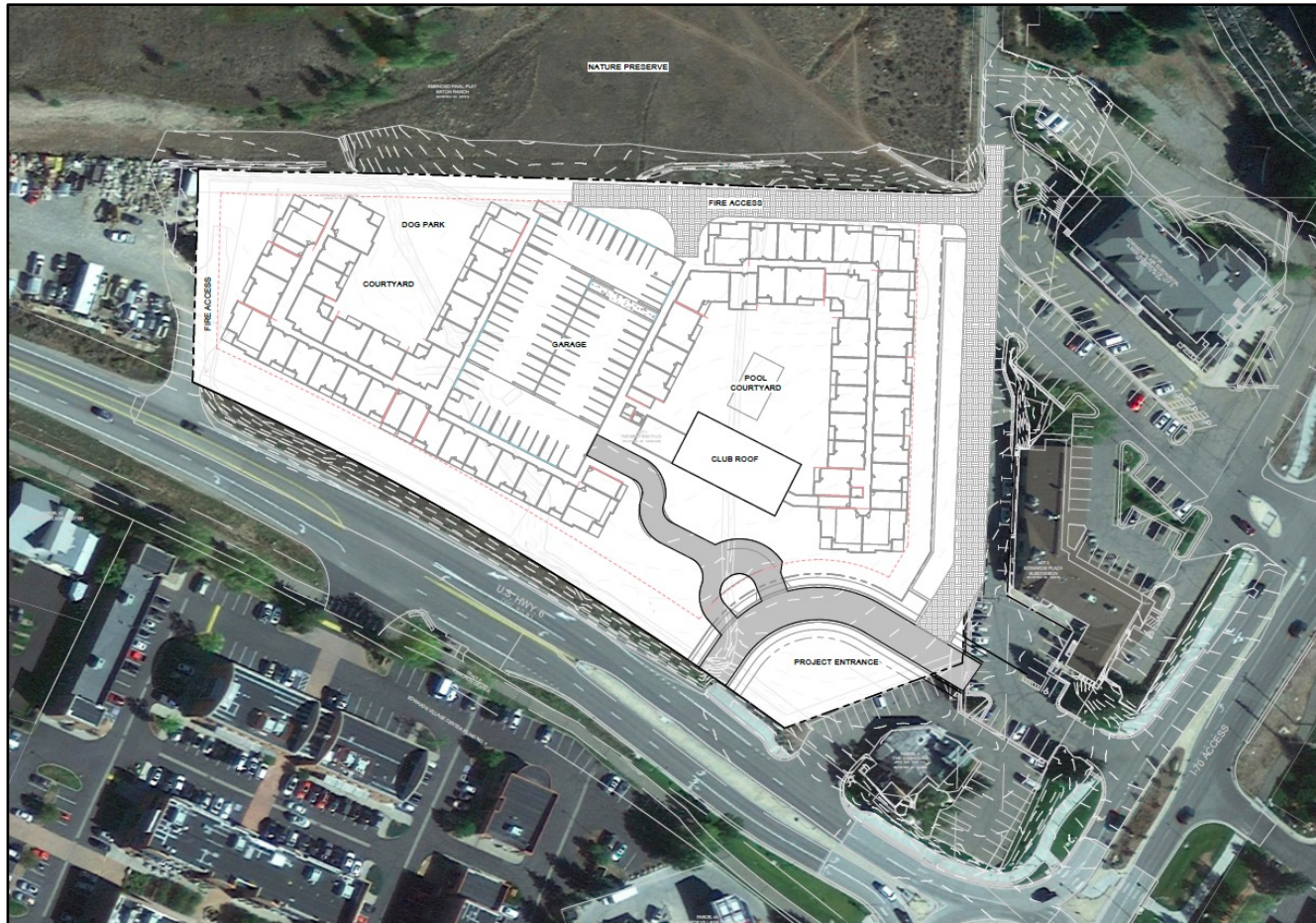
PRELIMINARY DESIGN CONCEPT



PRELIMINARY DESIGN CONCEPT



SITE PLAN



*All images included within the presentation are artistic renderings and are subject to change without notice.

WEST·END

